

SNACKS

Crispy Pad Thai Rolls <i>Chicken, vegetable with thai sauce</i>	34,5k	French Fries <i>Buttered flour coated potato fries, parmesan cheese</i>	35k
Pao Chicken Wings <i>Crispy bite-chicken, chilli flakes, sweet sour sauce</i>	39k	Pangsit Goreng <i>Sauteed chicken with thai sauce</i>	29k
Smoked Salmon Ala Pesto <i>Norwegian smoked salmon, basil pesto, mescaline, feta cheese, virgin olive oil</i>	65k	Pisang Goreng <i>Banana fritters served with caramel sauce</i>	29k
Calamari <i>Crunchy fried squid, cucumber pickle, red chilli padi</i>	39k		

ALL DAY DINING + BREAKFAST

Chilled Barley <i>Coconut milk, banana, strawberry, longan, granola</i>	49,5k	Alfredo Pasta <i>Spaghetti pasta, prawn with white cream sauce</i>	69k
Pancake <i>Pancake, strawberry high hills, sun dried pumpkin and almond seeds, chattily cream, hazelnut choco sauce, honey</i>	49k	Chicken Bratwurst <i>Chicken sausage, soft potato fondue, mesculn, mushroom ragout, basil pesto</i>	55k
Day and Night Break <i>Toasted brioche, choice of an egg chiffone, fried or omelet, mushroom ragout</i>	58k	Nasi Goreng Mamak <i>Green chilli fried rice, prawns, egg, peanut peyek</i>	59k
Wagyu Skewer <i>Wagyu beef, green tomato, shallot, sweet soy sauce</i>	65k	Ayam Sambal Matah <i>Floured fillet chicken leg, sambal matah, jasmine rice</i>	55k
Seared Pan Salmon <i>Norwegian salmon, pesto potato fondue, green bean, fresh tomato salsa</i>	128k	Bakso Sapi <i>Shiratake noodle, fine meatballs, baby pock coy</i>	49k
Green Grash Feta <i>Infused feta cheese, mesclun, tomato cherry, gomadare dressing</i>	55k	Bakmi Ayam Jamur <i>Sauteed chicken with mushroom, pock coy, pangsit goreng</i>	45k
Wagyu Rolled Steak <i>Australian Wagyu 150gr, potato fries or parmesan potato fondue, baby string beans</i>	145k		

COFFEE

Hot	Cold	Manual Brew (Hot & Ice)	
Espresso 25k	Ice White 38k	Coffee Filter 45k	
Double Espresso 29k	Ice Black 35k	<i>Frenchpress, v60, Aeropress, Cleverdripper</i>	
Cappuccino 38k	Ice Mocca 39k	Signature Coffee (Ice)	
Latte 39k	<i>Additional syrup 5k</i>	Banoffee 45k	
Piccolo 35k		<i>Single espresso, banana syrup, vanilla syrup</i>	
Macchiato 29k		Coconut Gato 45k	
Long Black 33k		<i>Coconut slush with single espresso</i>	
Flat White 38k			
Café Mocca 38k			
Split 57k			
<i>Cappuccino + Espresso</i>			

Guest Beans

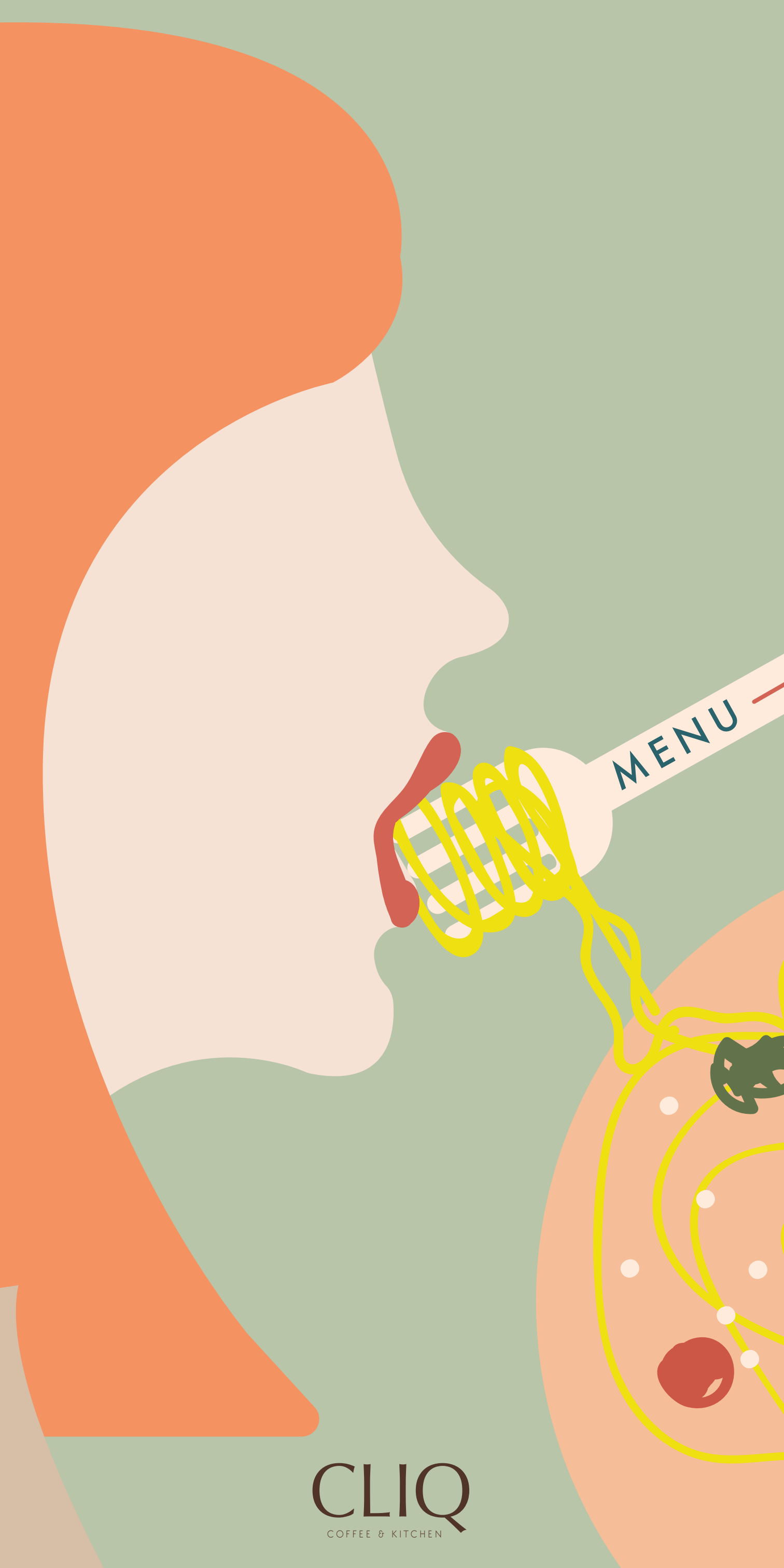
Please ask our barista

PREMIUM TEA

Blackcurrant 38k	Peppermint 38k
Earl Grey 38k	

NON-COFFEE

Tea (Hot/Ice) 29,5k	Pristine 600ml 25k
Ice Lychee tea 38k	San Pellegrino 250ml 35k
Lemon tea (Hot/Ice) 35k	
Thai Tea 35k	
Tropical Sunrise 35k	Seasonal Drink Barista
Chocolate (Hot/Ice) 35k	Please ask our barista



MENU

CLIQ
COFFEE & KITCHEN